



create, study and share online flash cards

flashcardmachine.com

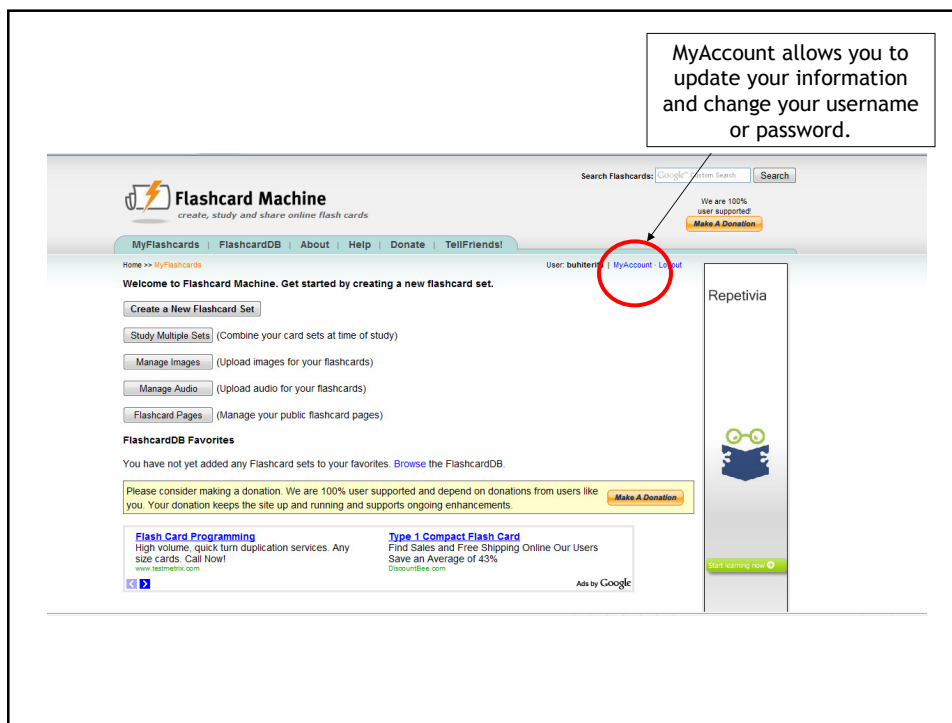
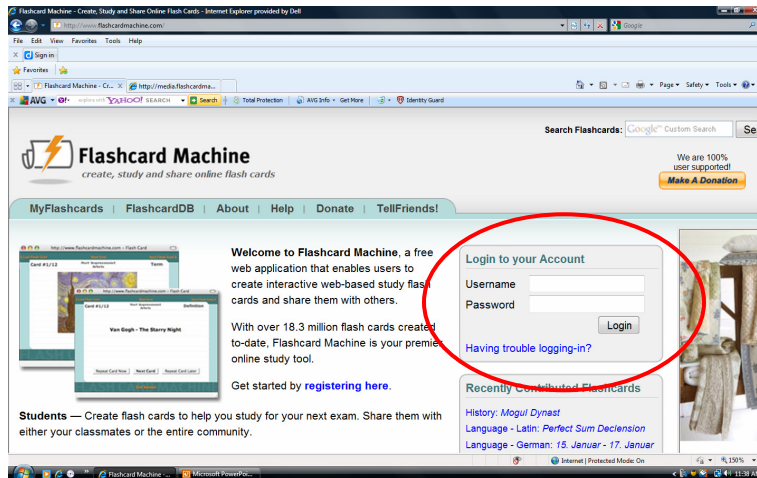
Technology Integration In-service – Jan. 18, 2010

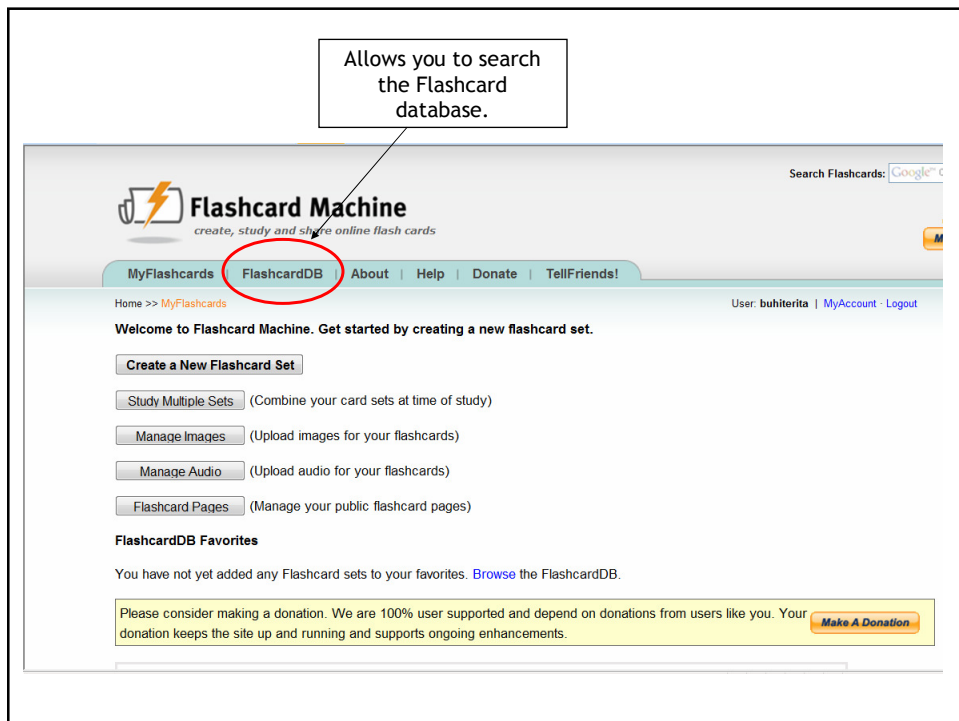
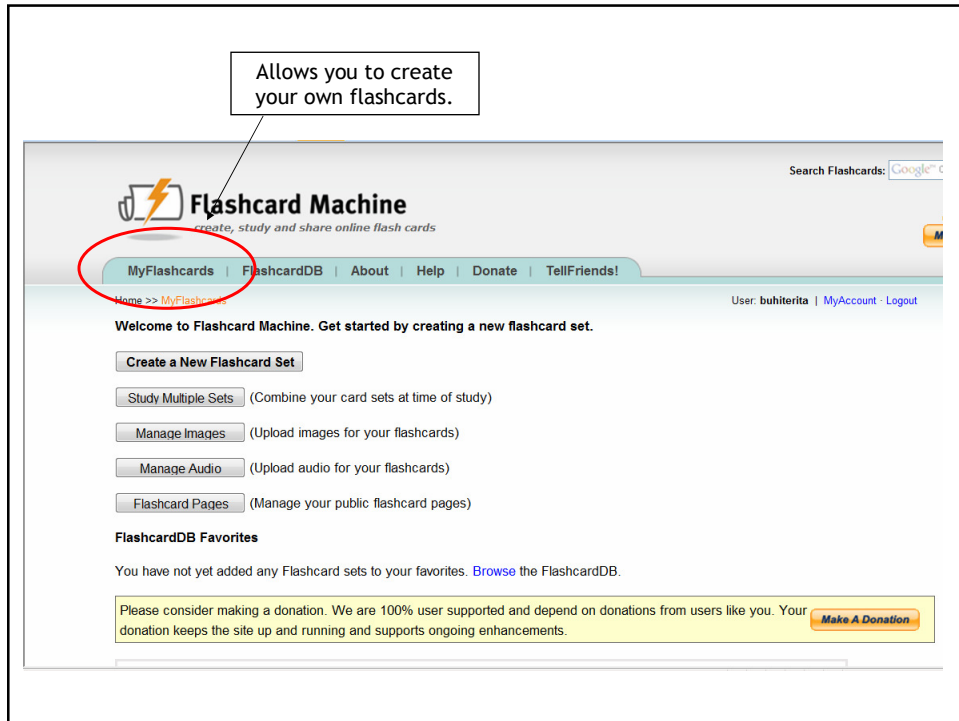
Created and presented by Rita Buhite

Table of Contents

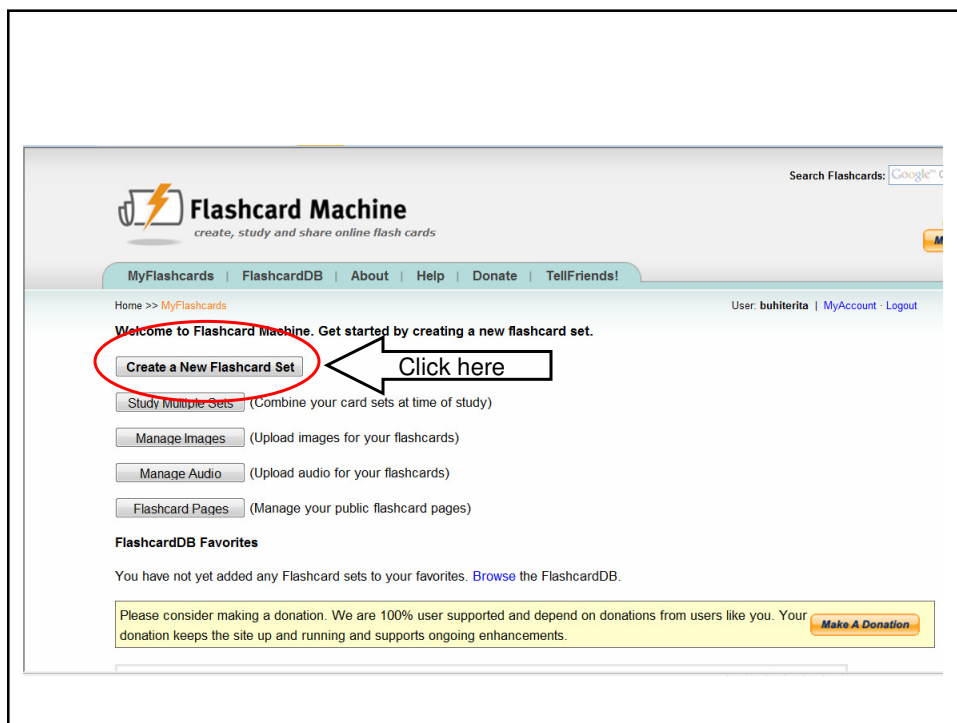
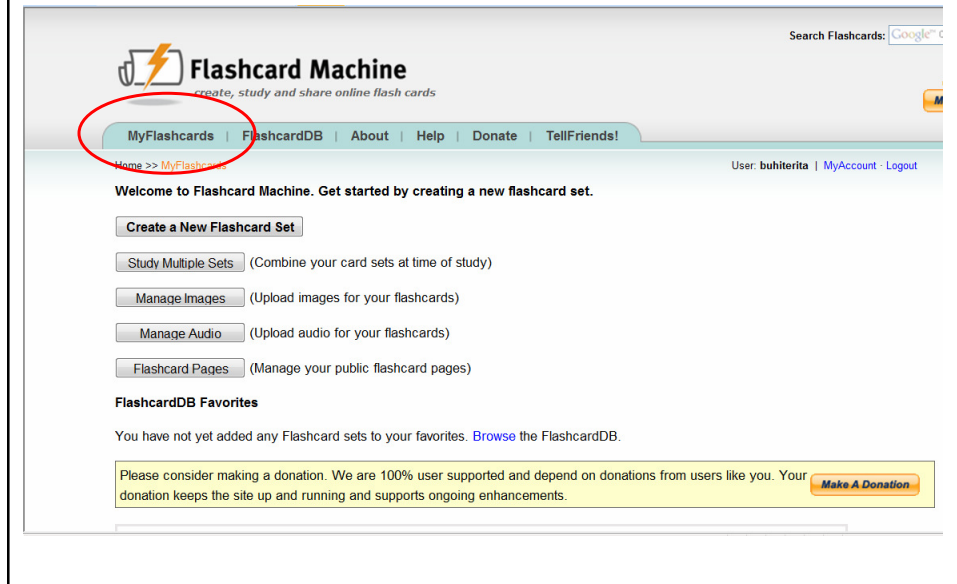
To log in	2-3
To create flashcards	4-8
Quick editor	9-10
Advanced editor	11-12
Using images	13-17
Using audio	17-19
Saving flashcards	20
Viewing flashcards	20
Set details	21
To log out	23


To log in





To create flashcards





Flashcard Machine

create, study and share online flash cards

Search Flashcards:

[MyFlashcards](#)
[FlashcardDB](#)
[About](#)
[Help](#)
[Donate](#)
[TellFriends!](#)

Home >> MyFlashcards >> [Set Details](#)

User: buhiterita | [MyAccount](#) | [Logout](#)

[Create a New Set](#)
[Return to MyFlashcards](#)

The first step in creating flashcards is to define the general set details. Once the set details are defined, you can start creating cards. If you are planning on making your flashcards available to other users of the site via the FlashcardDB, be sure to describe them accurately.

General Set Details

Subject

Select a subject

Level

Select a grade level

Title

Description

Font Style

Family: Verdana

Size: 18pt

Color: black

(Example)

FlashcardDB

☐ Enabled
☒ Disabled

Place this set in the FlashcardDB for use by other Flashcard Machine users. Please ensure that you have labeled the set appropriately and that it has four or more cards.

Read-Only Access

☐ Enabled
☒ Disabled

Read-only access makes your cards available via a direct URL that doesn't require registration.

Save Set Details

File

Favorites


Tools

Help

Flashcard Set

Search with YAHOO!

SEARCH



Flashcard Machine

create, study and share online flash cards

MyFlashcards

Home >> MyFlashcards

Create a New Set

The first step in creating flashcards is to define the general set details. Once the set details are defined, you can start creating cards. If you are planning on making your flashcards available to other users of the site via the FlashcardDB, be sure to describe them accurately.

General Set Details

Subject

Select a subject

Level

Select a grade level

Title

Description

Font Style

Family: Verdana

Size: 18pt

Color: black

(Example)

FlashcardDB

☐ Enabled
☒ Disabled

Place this set in the FlashcardDB for use by other Flashcard Machine users. Please ensure that you have labeled the set appropriately and that it has four or more cards.

Read-Only Access

☐ Enabled
☒ Disabled

Choose subject

Choose grade level

Create title for cards and a description

[Create a New Set](#) · [Return to MyFlashcards](#)

The first step in creating flashcards is to define the general set details. Once the set details are defined, you can start creating cards. If you are planning on making your flashcards available to other users of the site via the FlashcardDB, be sure to describe them accurately.

General Set Details

Subject

Select a subject

Level

Select a grade level

Title

Description

Font Style

Family: Georgia Size: 18pt Color: black (Example)

Choose a font style, size and color

[Create a New Set](#) · [Return to MyFlashcards](#)

The first step in creating flashcards is to define the general set details. Once the set details are defined, you can start creating cards. If you are planning on making your flashcards available to other users of the site via the FlashcardDB, be sure to describe them accurately.

General Set Details

Subject

Select a subject

Level

Select a grade level

Title

Description

Font Style

Family: Georgia Size: 18pt Color: black (Example)

FlashcardDB

☐ Enabled ☒ Disabled

Place this set in the FlashcardDB for use by other Flashcard Machine users. Please ensure that you have labeled the set appropriately and that it has four or more cards.

If you would like your flashcards included in the Flashcard Machine Database, click on enable. Otherwise they are only available to those you give the address to.

[Create a New Set](#)
[Return to MyFlashcards](#)

The first step in creating flashcards is to define the general set details. Once the set details are defined, you can start creating cards. If you are planning on making your flashcards available to other users of the site via the FlashcardDB, be sure to describe them accurately.

General Set Details

Subject:
Level:
Title:
Description:

Font Style:
Family:
Size:
Color:
(Example)

These choices are global and apply to all cards in the set. Individual cards can be formatted using the advanced editor.

FlashcardDB: ☐ Enabled ☒ Disabled

Place this set in the FlashcardDB for use by other Flashcard Machine users. Please ensure that you have labeled the set appropriately and that it has four or more cards.

Read-Only Access: ☒ Enabled ☐ Disabled

Read-only access makes your cards available via a direct URL that doesn't require registration.
Direct URL: URL and access code will be generated when you save set details

For your students to have access to your flashcards without registering, you want to click on Enabled.

After completing the information, click on the Save Set Details button.

[Start Study Session](#)
[Review](#)
[Print](#)
[Export: Tab Delimited Text](#)
[For iPod](#)

Create/Edit Cards (0)

[Advanced Editor](#)
[Quick Editor](#)
[Import](#)
[Re-Order Cards](#)
[Move/Copy Cards](#)

General Set Details

Subject:
Level:
Title:
Description:

Font Style:
Family:
Size:
Color:
(Example)

These choices are global and apply to all cards in the set. Individual cards can be formatted using the advanced editor.

FlashcardDB: ☐ Enabled ☒ Disabled

Place this set in the FlashcardDB for use by other Flashcard Machine users. Please ensure that you have labeled the set appropriately and that it has four or more cards.

Read-Only Access: ☒ Enabled ☐ Disabled

Read-only access makes your cards available via a direct URL that doesn't require registration.
Direct URL: <http://www.flashcardmachine.com/656248/b45i>

After saving the flashcard set, you will see the Direct URL to your flashcards. This is the address you can give to your students to access your flashcards.

Quick Editor

MyFlashcards | FlashcardDB | About | Help | Donate | TellFriends!

Home >> MyFlashcards >> [Set Details](#) User: buhiterita | [MyAccount](#) | [Logout](#)

[Manage Flashcard Set](#) · [Inservice Practice](#) · [Return to MyFlashcards](#)

Study / Print / Export

[Start Study Session](#) | [Review](#) | [Print](#) | Export: [Tab Delimited Text](#) | [For iPod](#)

Create/Edit Cards (0)

[Advanced Editor](#) | [Quick Editor](#) | [Import](#) | [Re-Order Cards](#) | [Move/Copy Cards](#)

General Set Details

Subject:

Level:

Title:

Description:

Font Style: Family: Size: Color: (Example)

These choices are global and apply to all cards in the set. Individual cards can be formatted using the advanced editor.

FlashcardDB: ☐ Enabled ☒ Disabled

Place this set in the FlashcardDB for use by other Flashcard Machine users. Please ensure that you have labeled the set appropriately and that it has four or more cards.

explore with YAHOO! SEARCH Search Total Protection AVG info Get More Identity Guard

Flashcard Machine
create, study and share online flash cards

Search Flashcards:

MyFlashcards | FlashcardDB | About | Help | Donate | TellFriends!

Home >> MyFlashcards >> Set Details >> [Quick Editor](#) User: buhiterita | [MyAccount](#) | [Logout](#)

[Quick Editor](#) · [Inservice Practice](#) · [Return to Set Details](#)

To add a new card to the set enter the term (front of card) and definition (back of card) then click 'Save'. When complete, or to review the cards already entered, click 'Exit'.

[Save](#) [Exit](#)

#	Term	Definition	Flagged
NEW	<input type="text"/>	<input type="text"/>	<input type="checkbox"/>

[Save](#) [Exit](#)

Type Term, Type Definition, click on Save.

Flashcard Machine
create, study and share online flash cards

Search Flashcards:

MyFlashcards | FlashcardDB | About | Help | Donate | TellFriends!

Home >> MyFlashcards >> Set Details >> [Quick Editor](#) User: buhiterita | [MyAccount](#) | [Logout](#)

[Quick Editor](#) · [Inservice Practice](#) · [Return to Set Details](#)

To add a new card to the set enter the term (front of card) and definition (back of card) then click 'Save'. When complete, or to review the cards already entered, click 'Exit'.

#	Term	Definition	Flagged
NEW	<input type="text"/>	<input type="text"/>	<input type="checkbox"/>
1	cat	animal	<input type="checkbox"/>

[Save](#) [Exit](#)

Continue until your flashcard set is complete. Be sure to press Save after last card before clicking on Exit.

Flashcard Machine
create, study and share online flash cards

Search Flashcards:

MyFlashcards | FlashcardDB | About | Help | Donate | TellFriends!

Home >> MyFlashcards >> [Set Details](#) User: buhiterita | [MyAccount](#) | [Logout](#)

[Manage Flashcard Set](#) · [Inservice Practice](#) · [Return to MyFlashcards](#)

Study / Print / Export

[Start Study Session](#) | [Review](#) | [Print](#) | [Export](#) | [Tab Delimited Text](#) | [For iPod](#)

Create/Edit Cards (2)

[Advanced Editor](#) | [Quick Editor](#) | [Import](#) | [Re-Order Cards](#) | [Move/Copy Cards](#)

General Set Details

Subject:

Level:

Title:

Description:

Font Style: Family: Size: Color: (Example)

FlashcardDB: ☒ Enabled ☐ Disabled
Place this set in the FlashcardDB for use by other Flashcard Machine users. Please ensure that you have labeled the set appropriately and that it has four or more cards.

Read-Only Access: ☒ Enabled ☐ Disabled
Read-only access makes your cards available via a direct URL that doesn't require registration.
Direct URL: <http://www.flashcardmachine.com/656266/6a9q>

[Save Set Details](#) [Delete Flashcard Set](#)

- When you have exited your flashcards, you will return to the setting page.
- To view your flashcards, click on the URL or on the Start Study Session button.

Advanced Editor

Flashcard Machine
create, study and share online flash cards

MyFlashcards | FlashcardDB | About | Help | Donate | TellFriends!

Home >> MyFlashcards >> Set Details User: buhiterita | MyAccount | Logout

Manage Flashcard Set - Inservice Practice - Return to MyFlashcards

Study / Print / Export

Start Study Session | Review | Print | Export | Tab Delimited Text | For iPod

Create/Edit Cards (2)

Advanced Editor | Quick Editor | Import | Re-Order Cards | Move/Copy Cards

General Set Details

Subject: Other
Level: 9th Grade
Title: Inservice Practice
Description: NA
Font Style: Family: Verdana Size: 18pt Color: black (Example)
FlashcardDB: ☒ Enabled ☐ Disabled
Read-Only Access: ☒ Enabled ☐ Disabled

Save Set Details | Delete Flashcard Set

Flashcard Machine
create, study and share online flash cards

MyFlashcards | FlashcardDB | About | Help | Donate | TellFriends!

Home >> MyFlashcards >> Set Details >> Advanced Editor User: buhiterita | MyAccount | Logout

Advanced Editor - Inservice Practice - Return to Set Details

Create a New Card

#	Term	Action
1	cat	EDIT - DELETE
2	dog	EDIT - DELETE

You can create a new flashcard set or add to an existing set. If creating a new set, you will only see the Create a New Card button.

Click on Create a New Card.

Flashcard Machine
create, study and share online flash cards

MyFlashcards | FlashcardDB | About | Help | Donate | TellFriends!

Home >> MyFlashcards >> Set Details >> Advanced Editor >> [Edit Card](#) User: buhiterita

Advanced Editor · [Inservice Practice](#) · [Return to Card List](#)

Editing card #4 of 4 total cards. Simple cards? Use the [quick editor](#).

[Previous](#) [Next](#) **Term** [WYSIWYG](#) / [Image](#) / [Audio](#) / [Plain Text](#)

Edit card # [Go](#)

[New Card](#)

[Delete Card](#)

[Move Card](#)

[Manage Images](#)

[Manage Audio](#)

[Save and Exit](#)

Definition [WYSIWYG](#) / [Image](#) / [Audio](#) / [Plain Text](#)

Flashcard Machine
create, study and share online flash cards

MyFlashcards | FlashcardDB | About | Help | Donate | TellFriends!

Home >> MyFlashcards >> Set Details >> Advanced Editor >> [Edit Card](#) User: buhiterita | [MyAccount](#) | [Logout](#)

Advanced Editor · [Inservice Practice](#) · [Return to Card List](#)

Editing card #3 of 3 total cards. Simple cards? Use the [quick editor](#).

[Previous](#) [Next](#) **Term** [WYSIWYG](#) / [Image](#) / [Audio](#) / [Plain Text](#)

Edit card # [Go](#)

[New Card](#)

[Delete Card](#)

[Move Card](#)

[Manage Images](#)

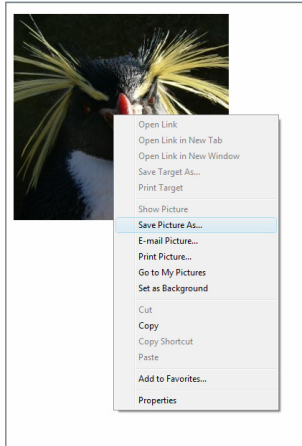
[Manage Audio](#)

[Save and Exit](#)

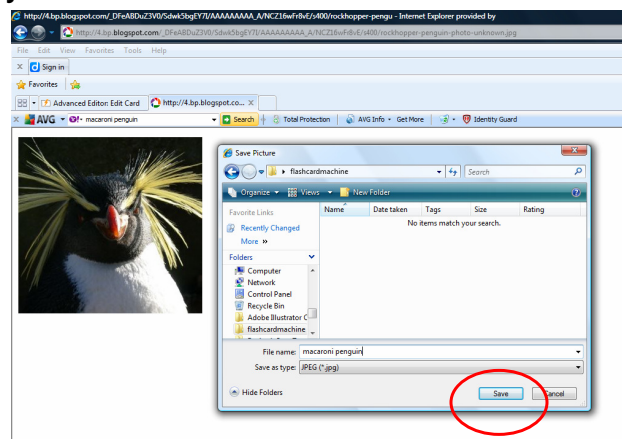
Definition [WYSIWYG](#) / [Image](#) / [Audio](#) / [Plain Text](#)

To use images in your flashcards

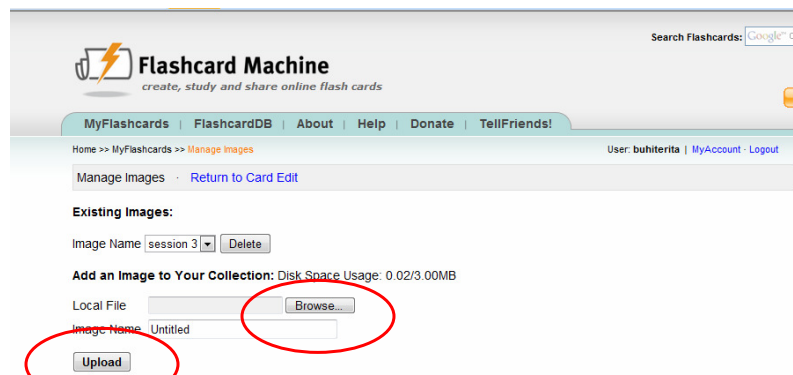
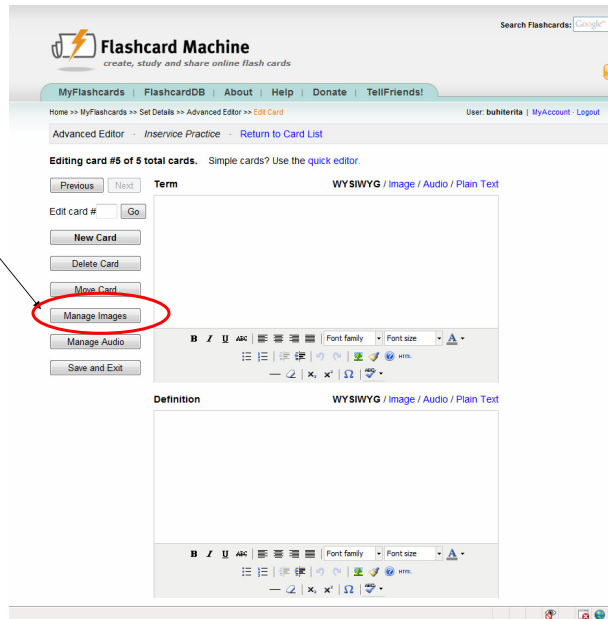
- Find a picture from the Internet and save it.
- Right-click on the picture and click on Save Picture As...



- Save it in your folder

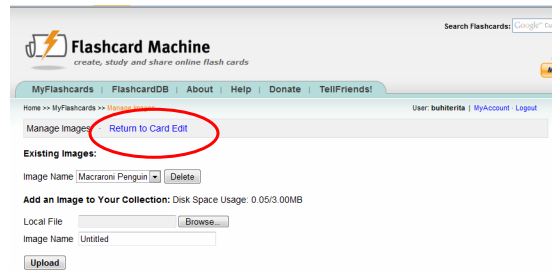


Click on the Manage Images button to upload your images onto the Flashcard Machine site.

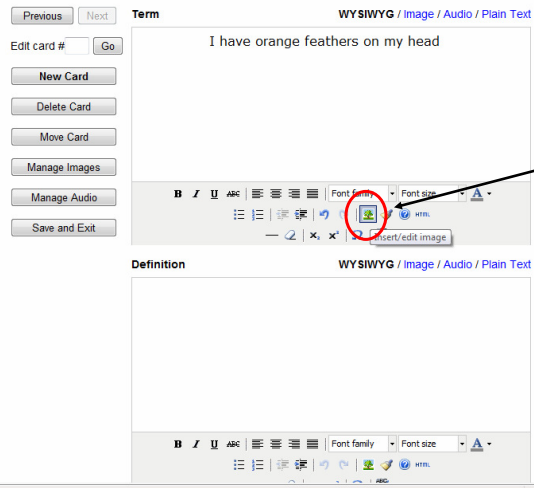


Click on the Browse button, find your image on your computer, name it and click on Upload.

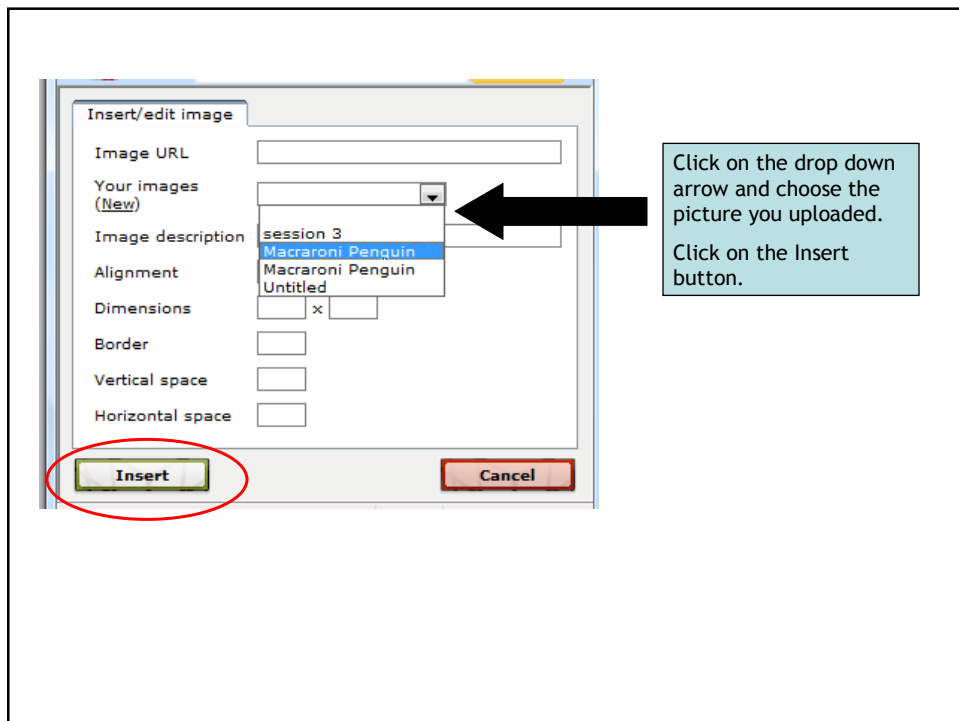
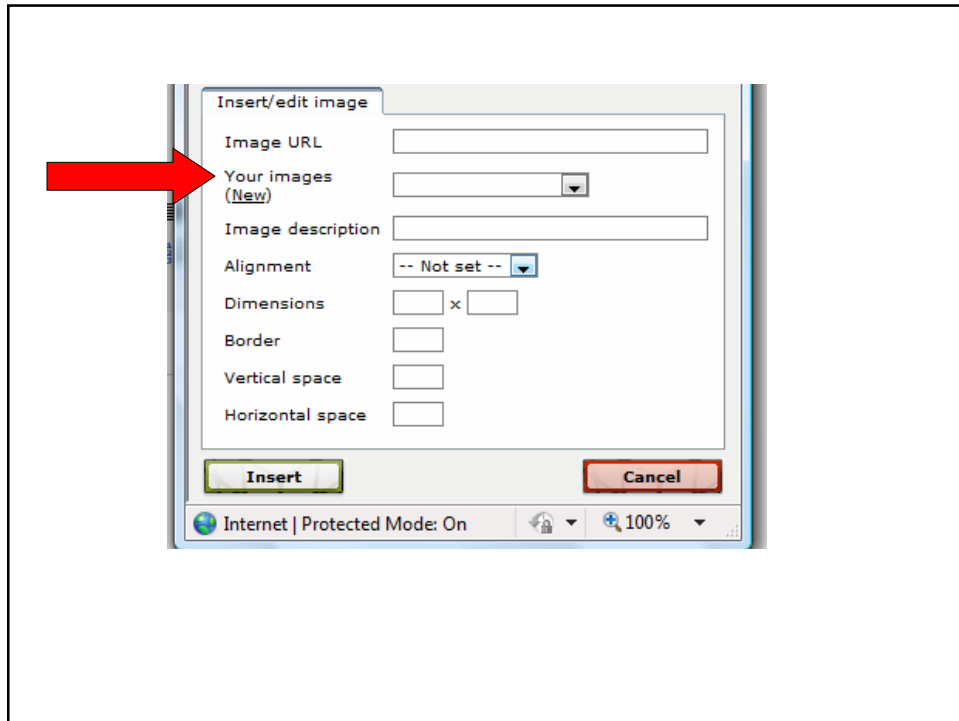
After uploading the image,
click on Return to Card
Edit



Editing card #5 of 5 total cards. Simple cards? Use the [quick editor](#).



Type information that you
would like to have appear
above your image (if any).
Click on Insert/edit image
icon.



Flashcard Machine
create, study and share online flash cards

Search Flashcards:

MyFlashcards | FlashcardDB | About | Help | Donate | TellFriends!

Home >> MyFlashcards >> Set Details >> Advanced Editor >> [Edit Card](#) User: buhiterita | [MyAccount](#) | [Logout](#)

Advanced Editor · Inservice Practice · [Return to Card List](#)


Editing card #5 of 5 total cards. Simple cards? Use the [quick editor](#).

Previous Next **Term** WYSIWYG / Image / Audio / Plain Text

Edit card # Go

New Card
Delete Card
Move Card
Manage Images
Manage Audio
Save and Exit

I have orange feathers on my head



Font family Font size

Definition WYSIWYG / Image / Audio / Plain Text

Your image is inserted into the card.
Click on it to get the resizing handles.
Drag from the corners to adjust the size.
Click on New Card to add more cards.

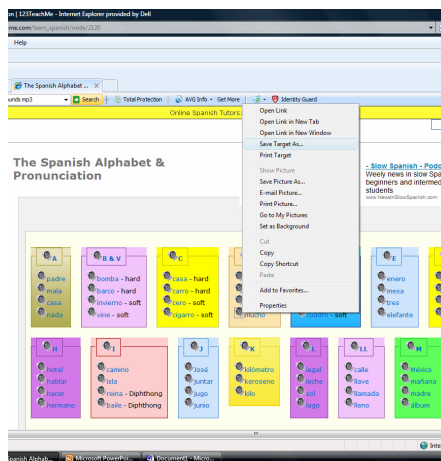
To add audio

- Save your mp3 file to your folder.

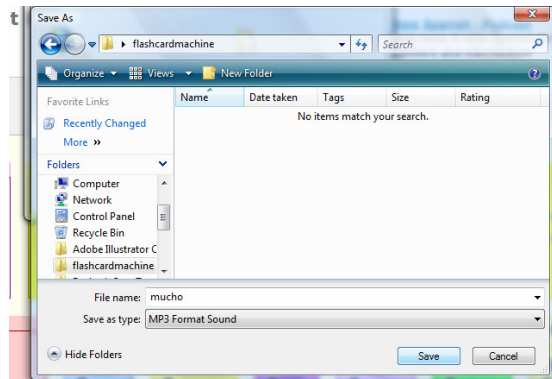
Example site:

<http://www.123teachme.com/learn-spanish/node/2120>

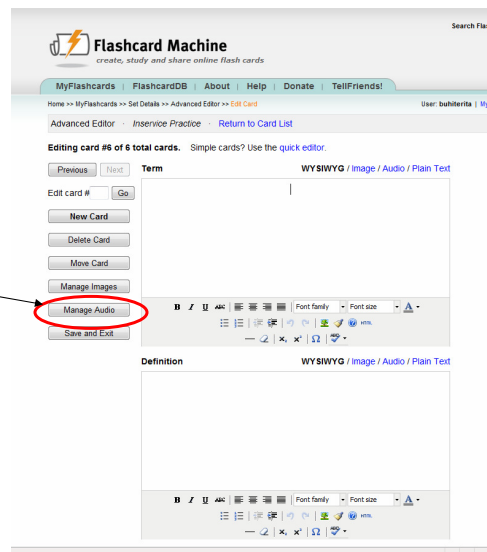
- Right click on your audio file and click on Save Target As...

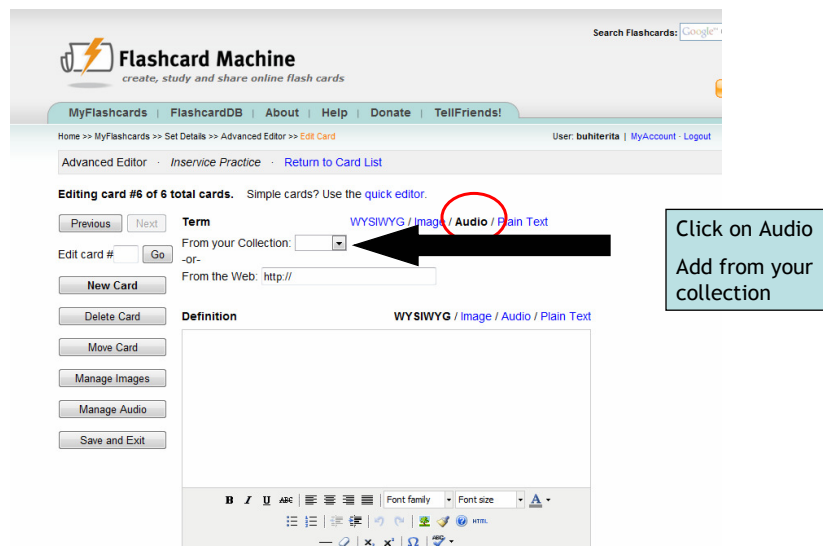
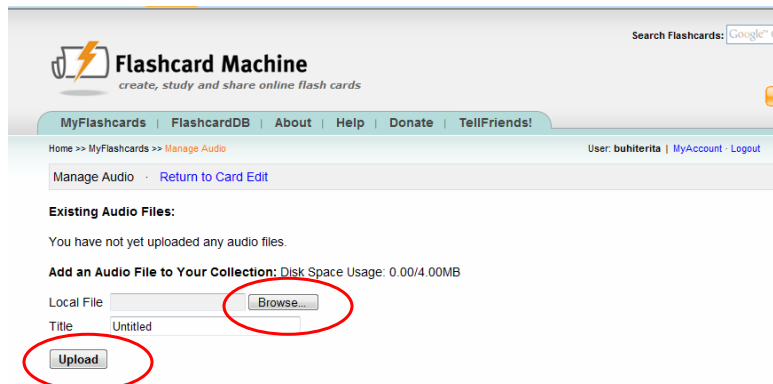


- Save in your folder



Click on the Manage Audio button to upload your audio onto the Flashcard Machine site.





To save your flashcard set

MyFlashcards | FlashcardDB | About | Help | Donate | TellFriends!

Home >> MyFlashcards >> Set Details >> Advanced Editor >> Edit Card

User: buhlerita | MyAccount | Logout

Advanced Editor - Inservice Practice - Return to Card List

Editing card #6 of 6 total cards. Simple cards? Use the quick editor.

Previous Next Term WYSIWYG / Image / Audio / Plain Text

Edit card # Go From your Collection: Mucho

-or- From the Web: http://

New Card

Delete Card

Move Card

Manage Images

Manage Audio

Save and Exit

Definition WYSIWYG / Image / Audio / Plain Text

great, much, many

Font family Font size

To view your flashcards


Flashcard Machine

MyFlashcards | FlashcardDB | About | Help | Donate | TellFriends!

User: buhlerita | MyAccount | Logout

Advanced Editor - Inservice Practice - Return to Set Details

Create a New Card

#	Term	Action
1	cat	EDIT - DELETE
2	dog	EDIT - DELETE
3	Emperor Penguin	EDIT - DELETE
4	I have orange feathers on my head	EDIT - DELETE
5		EDIT - DELETE
6	(audio 2912)	EDIT - DELETE

Set Details

Click on Start Study Session

Flashcard Machine
create, study and share online flash cards

MyFlashcards | FlashcardDB | About | Help | Donate | TellFriends!

Home >> MyFlashcards >> Set Details

User: buhiterita | MyAccount

Manage Flashcard Set | Inservice Practice | Return to MyFlashcards

Study / Print / Export

Start Study Session | Review | Print | Export | Tab Delimited Text | For iPod

Create/Edit Cards (6)

Advanced Editor | Quick Editor | Import | Re-Order Cards | Move/Copy Cards

General Set Details

Subject: Other
Level: 9th Grade
Title: Inservice Practice
Description: NA
Font Style: Family: Verdana | Size: 18pt | Color: black (Example)
FlashcardDB: ☒ Enabled ☐ Disabled
Read-Only Access: ☒ Enabled ☐ Disabled

Configure your study session:

Order: Random
Sequence: Term then Definition
Flagged Cards (0) Only
(You must first flag some cards to use this feature)
Auto-Flip: ☐ Yes ☒ No

Begin Exit

Tips:

To flag a card during your study session, click the flag icon in the upper left corner of the study window.

To save your place in a study session for later review, click End Session and follow the prompts.

Choose your preferences for the study session and click begin



Click Flip Card or the Space bar to advance flashcards.

The screenshot displays the 'Flashcard Machine' website interface. The header includes the site logo and a search bar. Below the header, there is a navigation menu with links like 'MyFlashcards', 'FlashcardDB', 'About', 'Help', 'Donate', and 'TellFriends!'. The main content area shows the 'General Set Details' form for a set titled 'Inservice Practice'. The form includes dropdown menus for 'Subject' (set to 'Other') and 'Level' (set to '9th Grade'), a text field for 'Title' (containing 'Inservice Practice'), and a text area for 'Description' (containing 'NA'). There are also options for 'Font Style' (Family: Verdana, Size: 18pt, Color: black) and a 'FlashcardDB' status (set to 'Disabled'). A red circle highlights the 'Logout' link in the top right corner of the page.

Be sure to log off Flashcard Machine.